



American Society of Hematology
Helping hematologists conquer blood diseases worldwide

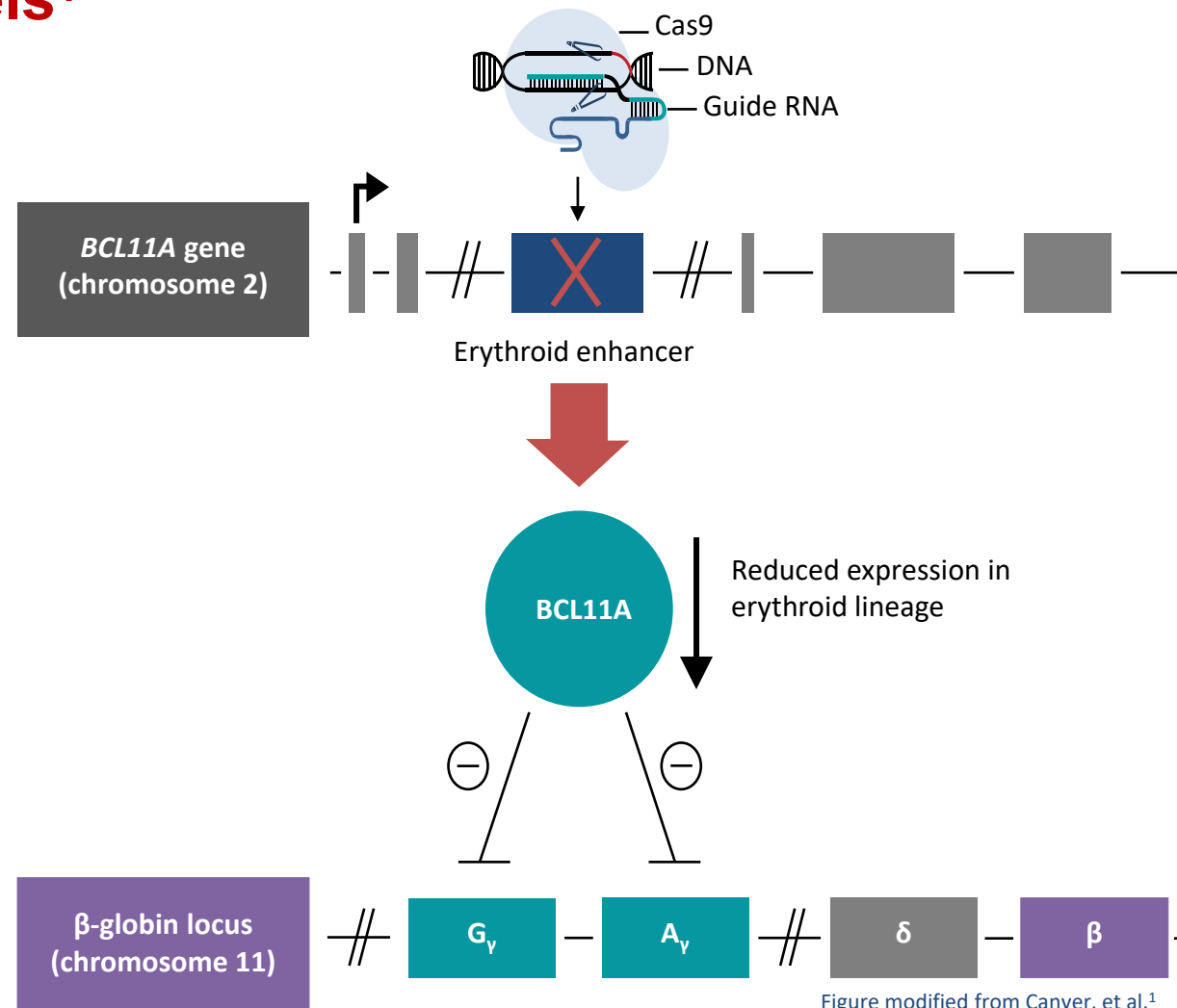
Efficacy and Safety of a Single Dose of Exagamglogene Autotemcel for Transfusion-Dependent β -Thalassemia and Severe Sickle Cell Disease

Haydar Frangoul,¹ Franco Locatelli,² Monica Bhatia,³ Selim Corbacioglu,⁴ Josu de la Fuente,⁵ Donna Wall,⁶ Amanda Li,⁷ Peter Lang,⁸ Robert Liem,⁹ Maria Domenica Cappellini,¹⁰ Markus Mapara,¹¹ Roland Meisel,¹² Lyndsay Molinari,¹³ Mariane de Montalembert,¹⁴ Antonis Kattamis,¹⁵ Stephan Lobitz,¹⁶ Damiano Rondelli,¹⁷ Ami Shah,¹⁸ Akshay Sharma,¹⁹ Sujit Sheth,²⁰ Martin Steinberg,²¹ Mark C. Walters,²² Yael Bobruff,²³ Laura Bower,²³ Chris Simard,²³ Yang Song,²³ Lanju Zhang,²³ Anjali Sharma,²⁴ Suzan Imren,²³ Bill Hobbs,²³ Stephan Grupp²⁵ on behalf of the CLIMB THAL-111 and CLIMB SCD-121 teams

¹Sarah Cannon Center for Blood Cancer at The Children's Hospital at TriStar Centennial, Nashville, TN, USA; ²Ospedale Pediatrico Bambino Gesù Rome, Sapienza, University of Rome, Italy; ³Department of Pediatrics, Columbia University, New York-Presbyterian Morgan Stanley Children's Hospital, New York, NY, USA; ⁴University of Regensburg, Regensburg, Germany; ⁵Imperial College Healthcare NHS Trust, St Mary's Hospital, London, UK; ⁶The Hospital for Sick Children/University of Toronto, Toronto, Canada; ⁷BC Children's Hospital, University of British Columbia, Vancouver, Canada; ⁸University of Tübingen, Tübingen, Germany; ⁹Ann & Robert H. Lurie Children's Hospital of Chicago, Chicago, IL, USA; ¹⁰University of Milan, Milan, Italy; ¹¹Herbert Irving Comprehensive Cancer Center, Columbia University, New York, NY, USA; ¹²Division of Pediatric Stem Cell Therapy, Heinrich-Heine-University, Duesseldorf, Germany; ¹³Sarah Cannon Pediatric Transplant and Cellular Therapy Program at Methodist Children's Hospital, San Antonio, TX, USA; ¹⁴Necker-Enfants Malades Hospital, Assistance Publique-Hôpitaux de Paris (AP-HP), University of Paris, Paris, France; ¹⁵University of Athens, Athens, Greece; ¹⁶Gemeinschaftsklinikum Mittelrhein, Koblenz, Germany; ¹⁷University of Illinois at Chicago, Chicago, IL, USA; ¹⁸Stanford University, Palo Alto, CA, USA; ¹⁹Bone Marrow Transplantation and Cellular Therapy, St. Jude Children's Research Hospital, Memphis, TN, USA; ²⁰Joan and Sanford I Weill Medical College of Cornell University, New York, NY, USA; ²¹Boston University School of Medicine, Boston, MA, USA; ²²UCSF Benioff Children's Hospital, Oakland, CA, USA; ²³Vertex Pharmaceuticals Incorporated, Boston, MA, USA; ²⁴CRISPR Therapeutics, Cambridge, MA, USA; ²⁵Children's Hospital of Philadelphia, Perelman School of Medicine at the University of Pennsylvania, Philadelphia, PA, USA

Exa-cel is a Cell Therapy that Uses Non-Viral, *Ex Vivo* CRISPR/Cas9-Mediated Editing of *BCL11A* to Increase HbF Levels¹

- Naturally occurring **genetic polymorphisms** in *BCL11A* are associated with elevated HbF and decreased severity of TDT and SCD²⁻⁴
- **BCL11A suppresses** expression of γ -globin and thus HbF
- **Editing of *BCL11A*** reactivates γ -globin expression and formation of HbF ($\alpha 2\gamma 2$) in mouse models⁴
- **Exa-cel** is produced using non-viral, *ex vivo* editing of the erythroid-specific enhancer region of *BCL11A* in CD34⁺ HSPCs and **reduces erythroid-specific expression of BCL11A**
- **Infusion of exa-cel** leads to an **increase in HbF** levels in erythroid cells *in vivo*



BCL11A, B-cell lymphoma/leukemia 11A; **CRISPR**, clustered regularly interspaced short palindromic repeats; **DNA**, deoxyribonucleic acid; **HbF**, fetal hemoglobin; **HSPC**, hematopoietic stem and progenitor cell; **RNA**, ribonucleic acid; **SCD**, sickle cell disease; **TDT**, transfusion dependent β -thalassemia.

1. Canver MC, et al. *Blood*. 2016;127:2536-2545; 2. Murray N, et al. *Br J Haematol*. 1988;69:89-92; 3. Bank A. *Blood*. 2006;107:435-443; 4. Bauer DE, et al. *Science*. 2013;342:253-257.

CLIMB THAL-111 and CLIMB SCD-121 Pivotal Trials of Exa-cel in Patients With TDT and Severe SCD Are Ongoing



Design	International, multicenter, open-label, single-arm pivotal study of exa-cel (NCT03655678)	International, multicenter, open-label, single-arm pivotal study of exa-cel (NCT03745287)
Key Inclusion Criteria	Twelve to 35 years of age with TDT, including β^0/β^0 genotypes, defined as a history of ≥ 100 mL/kg/year or ≥ 10 units/year of pRBC transfusions in the previous 2 years	Twelve to 35 years of age with severe SCD and a history of ≥ 2 VOCs per year in the previous 2 years
Primary Endpoint	<i>Primary efficacy endpoint:</i> Proportion of patients achieving a maintained weighted average Hb ≥ 9 g/dL without RBC transfusions for at least 12 consecutive months after exa-cel infusion	<i>Primary efficacy endpoint:</i> Proportion of patients who have not experienced any severe VOC for at least 12 consecutive months after exa-cel infusion
Clinical Assessments	Engraftment, total Hb, HbF, <i>BCL11A</i> edited alleles, transfusions, and AEs	Engraftment, total Hb, HbF, <i>BCL11A</i> edited alleles, transfusions, VOCs, and AEs

Data presented on all patients infused with exa-cel who have TDT (n = 44) or severe SCD (n = 31) as of February 2022 (N = 75)

AE, adverse event; *BCL11A*, B-cell lymphoma/leukemia 11A; Hb, hemoglobin; HbF, fetal hemoglobin; pRBC, packed red blood cell; RBC, red blood cell; SCD, sickle cell disease; TDT, transfusion dependent β -thalassemia; VOC, vaso-occlusive crisis.

Baseline Demographics and Clinical Characteristics of the 44 Patients With TDT Infused With Exa-cel



Exa-cel (TDT)
n = 44

Sex, n (%)

Male	21 (47.7)
Female	23 (52.3)

Genotype, n (%)

β^0/β^0	14 (31.8)
β^0/β^0 -like (β^0 /IVS-I-110; IVS-I-110/IVS-I-110)	12 (27.3)
Non- β^0/β^0 -like	18 (40.9)

Age at baseline, years, mean (min, max) 21.3 (12, 35)

Historical RBC transfusions per year,^a units, mean (min, max) 36.0 (15, 71)

Data cut-off February 2022

RBC, red blood cell; TDT, transfusion dependent β -thalassemia.

^a Annualized over 2 years before signing of the informed consent form or the latest rescreening.



Baseline Demographics and Clinical Characteristics of the 31 Patients With SCD Infused With Exa-cel



	Exa-cel (SCD) n = 31
Sex, n (%)	
Male	16 (51.6)
Female	15 (48.4)
Genotype, n (%)	
β^S/β^S	29 (93.5)
β^S/β^0	2 (6.5)
Age at baseline, years, mean (min, max)	22.5 (12, 34)
Historical VOC episodes per year,^a mean (min, max)	3.9 (2.0, 9.5)

Data cut-off February 2022

SCD, sickle cell disease; VOC, vaso-occlusive crisis.

^a Annualized rate during the 2 years before signing of the informed consent form or the latest rescreening.

All Patients Engrafted Neutrophils and Platelets After Exa-cel Infusion



	Exa-cel (TDT) n = 44	Exa-cel (SCD) n = 31
Drug product cell dose,^a median (range) CD34 ⁺ cells × 10 ⁶ /kg	7.5 (3.0, 19.7)	4.0 (2.9, 14.4)
Neutrophil engraftment,^b median (range) Study Day ^c	29.0 (12, 56)	27.0 (15, 38)
Platelet engraftment,^d median (range) Study Day ^c	43.5 (20, 213)	32.0 (23, 74)
Duration of follow-up, median (range) Months ^c	11.9 (1.2, 37.2)	10.2 (2.0, 32.3)

Data cut-off February 2022

SCD, sickle cell disease; TDT, transfusion dependent β-thalassemia.

^a Across multiple drug product lots per patient.

^b Defined as the first day of 3 consecutive measurements of absolute neutrophil count ≥500 cells/μL on 3 different days.

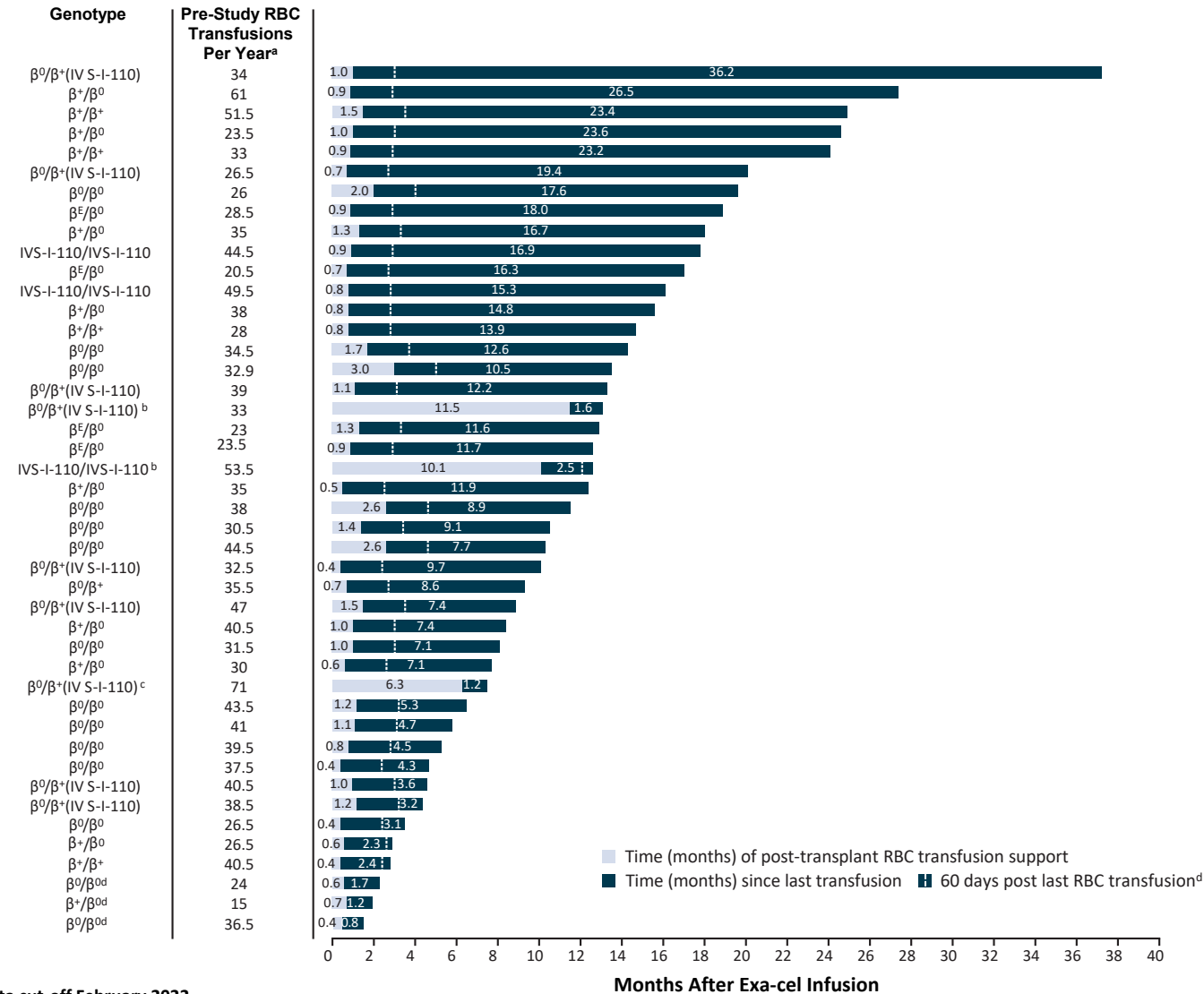
^c Defined as day after exa-cel infusion.

^d Defined as the first day of 3 consecutive measurements of unsupported (no platelet transfusion in last 7 days) platelet count ≥20,000/μL on 3 different days after exa-cel infusion (TDT) and as the first day of 3 consecutive measurements of unsupported (no platelet transfusions for last 7 days) platelet count ≥50,000/μL on 3 different days after exa-cel infusion (SCD).



Forty-Two of 44 Patients With TDT Treated With Exa-cel Were Transfusion-Free

- Time (months) of **post-transplant RBC transfusion support** is indicated by the light blue bar and time (months) since **last transfusion** is indicated by the dark blue bar
- 42 of 44 patients **stopped RBC transfusions** (duration from 0.8 to 36.2 months)
- Two patients had not yet stopped transfusions but have 75% and 89% **reductions in transfusion volume**



Data cut-off February 2022

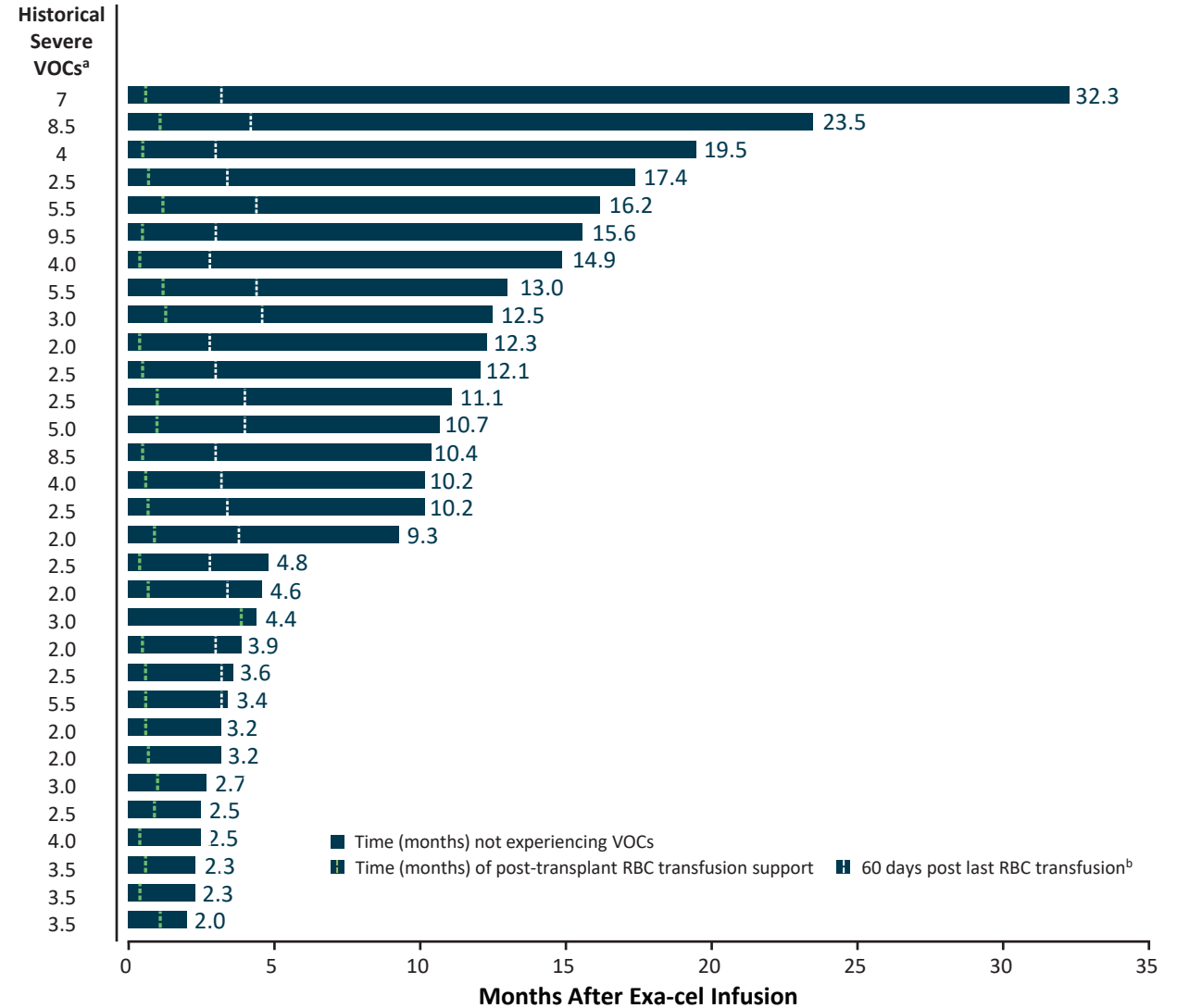
Each row in the figure on the right represents an individual patient.

^aNumber of transfusion units annualized over 2 years; ^bReceived RBC transfusions at or after data cut; ^cPatient stopped transfusions after data cut; ^dPatients are evaluable for elimination of transfusions starting 60 days after their last transfusion.

Hb, hemoglobin; RBC, red blood cell; TDT, transfusion-dependent β -thalassemia.

All Patients With SCD Treated With Exa-cel Were VOC-Free

- Time (months) since **exa-cel infusion** is indicated by the dark bar
- 31 of 31 patients were **VOC-free** after exa-cel infusion (duration from 2.0 to 32.3 months)



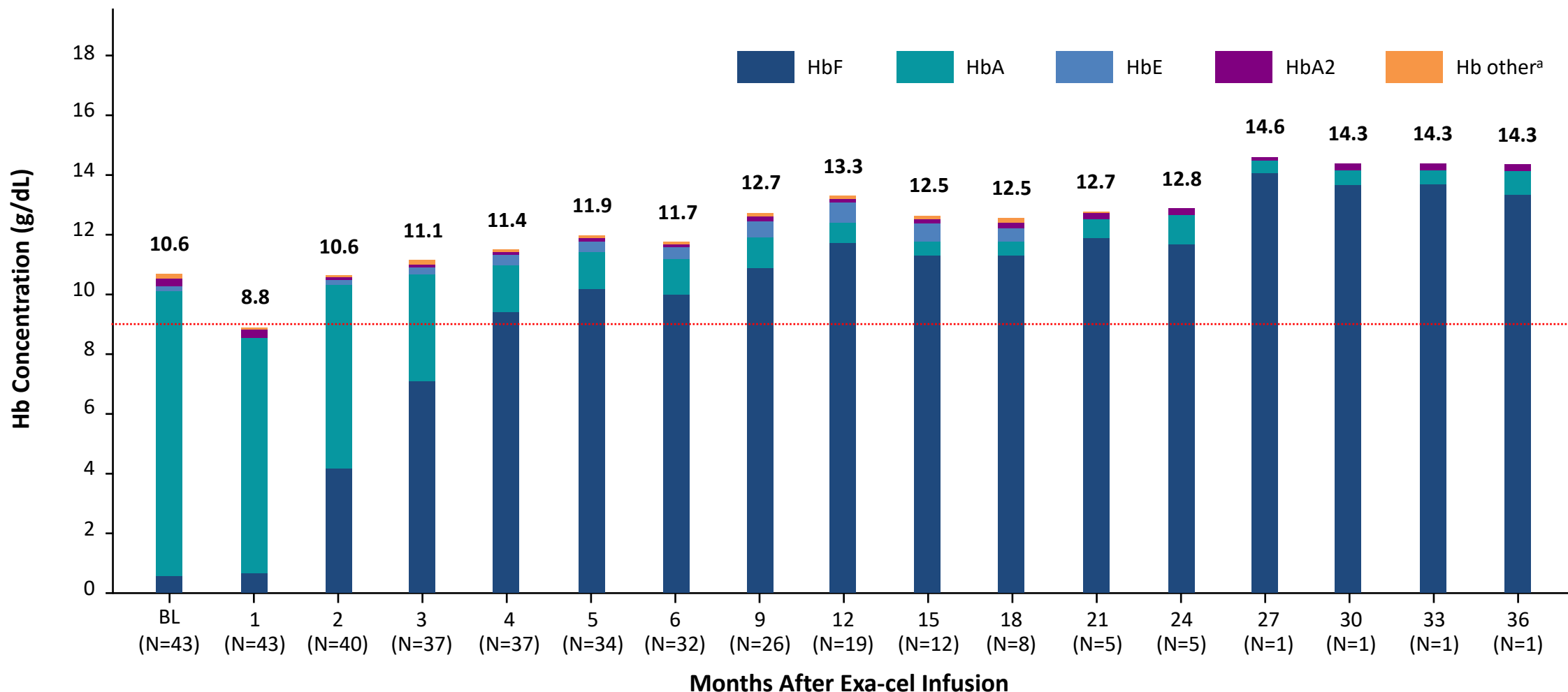
Data cut-off February 2022

Each row in the figure on the right represents an individual patient.

^aPre-study severe VOCs annualized over 2 years; ^bPatients are evaluated for elimination of VOCs starting 60 days after their last transfusion.

RBC, red blood cell; SCD, sickle cell disease; VOC, vaso-occlusive crisis.

Patients With TDT Had Early Increases in HbF That Drive Increases in Total Hb Above the Transfusion Threshold



Data cut-off February 2022

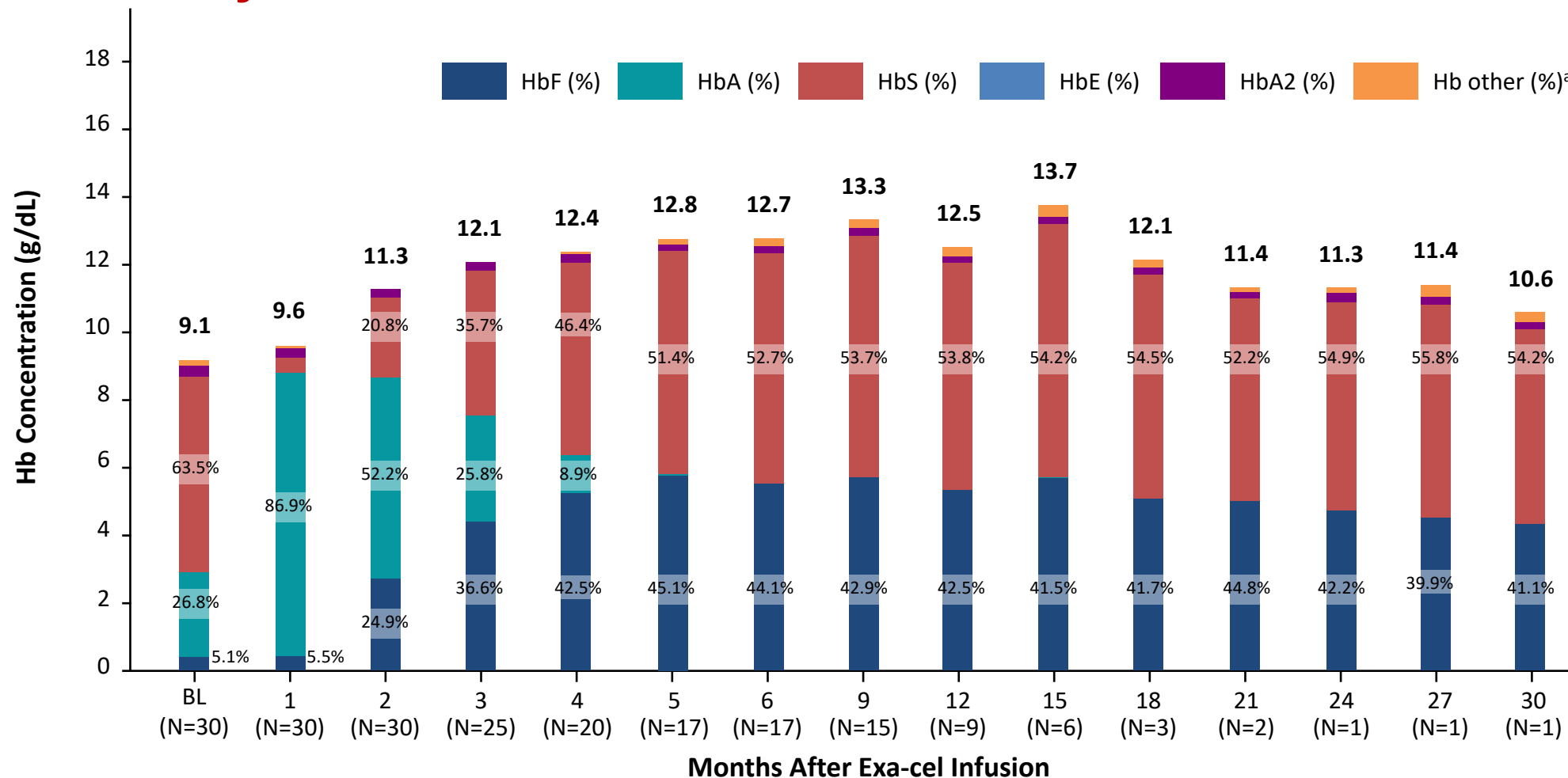
BL, baseline; Hb, hemoglobin; HbA, adult hemoglobin; HbA2, hemoglobin alpha 2; HbE, hemoglobin E; HbF, fetal hemoglobin; TDT, transfusion-dependent β -thalassemia.

Mean total Hb concentrations are shown directly above bars.

^a Hb adducts and other variants.



Patients With SCD Had Clinically Meaningful Increases in HbF (>20%) that Occurred Early and Were Sustained Over Time



Data cut-off February 2022

BL, baseline; Hb, hemoglobin; HbA, adult hemoglobin; HbA2, hemoglobin alpha 2; HbE, hemoglobin E; HbF, fetal hemoglobin; HbS, sickle hemoglobin; SCD, sickle cell disease.

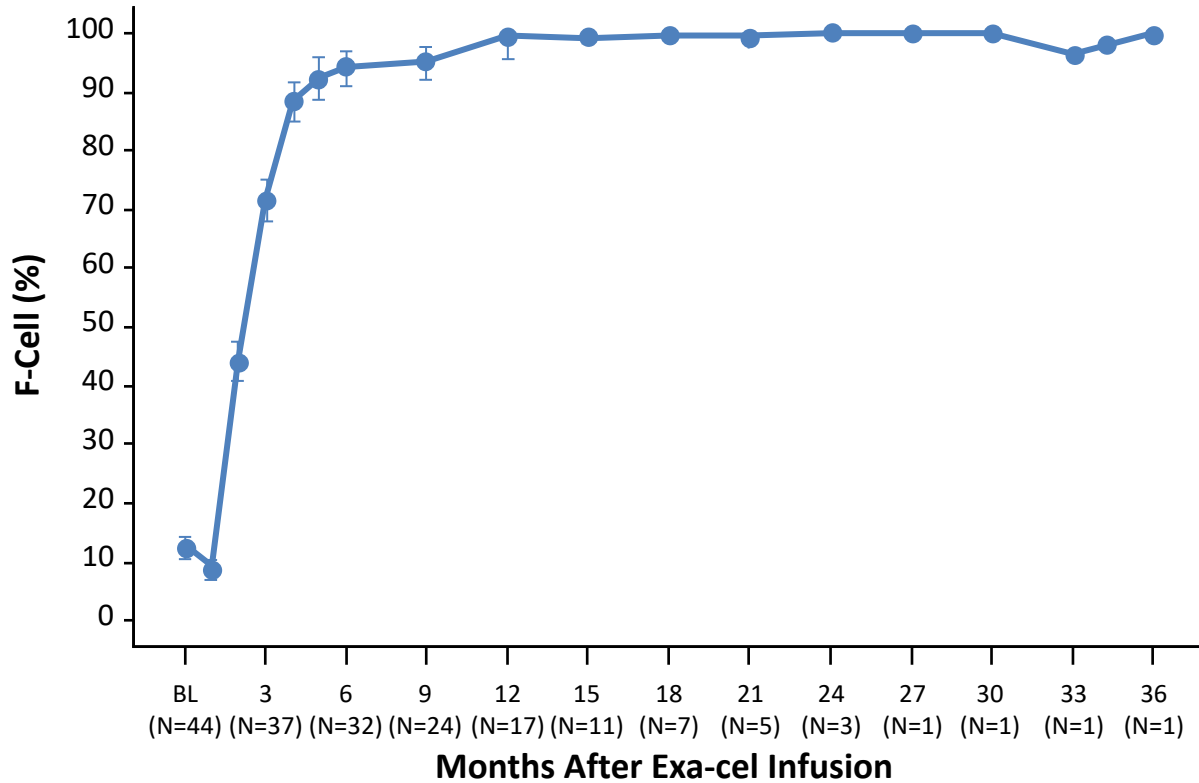
Bars show mean Hb (g/dL). Labels indicate mean proportion of HbS and HbF as a percentage of total Hb. Mean total Hb concentrations are shown directly above bars.

^a Hb adducts and other variants.

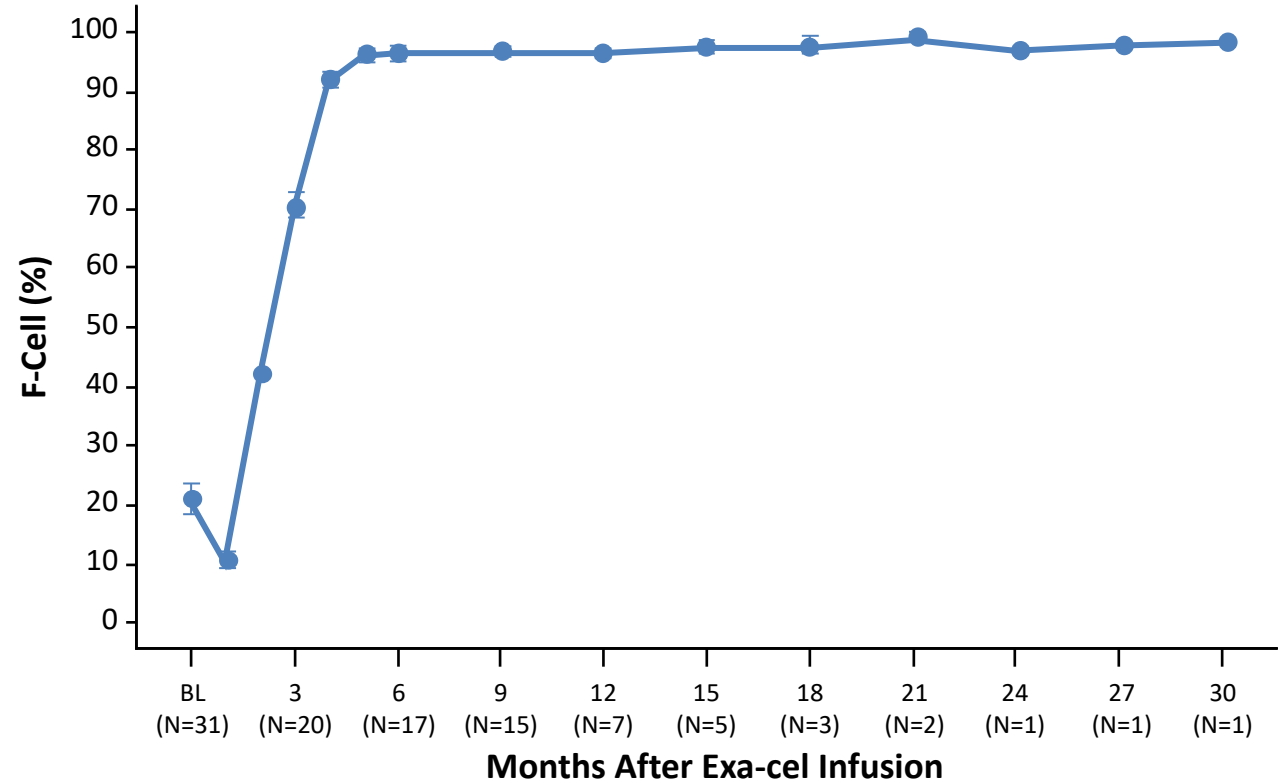


Pancellular Distribution of HbF Is Maintained Over Time

CLIMB
THAL-111



CLIMB
SCD-121

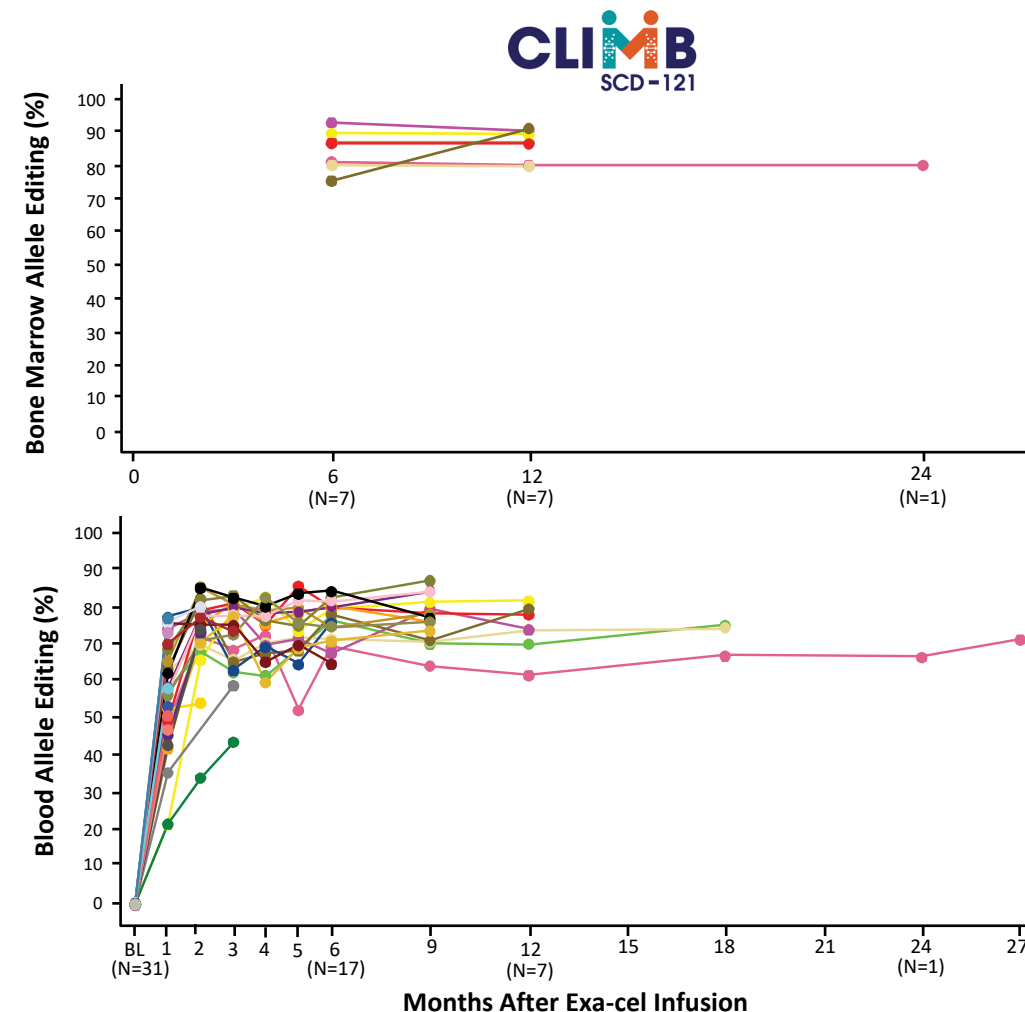
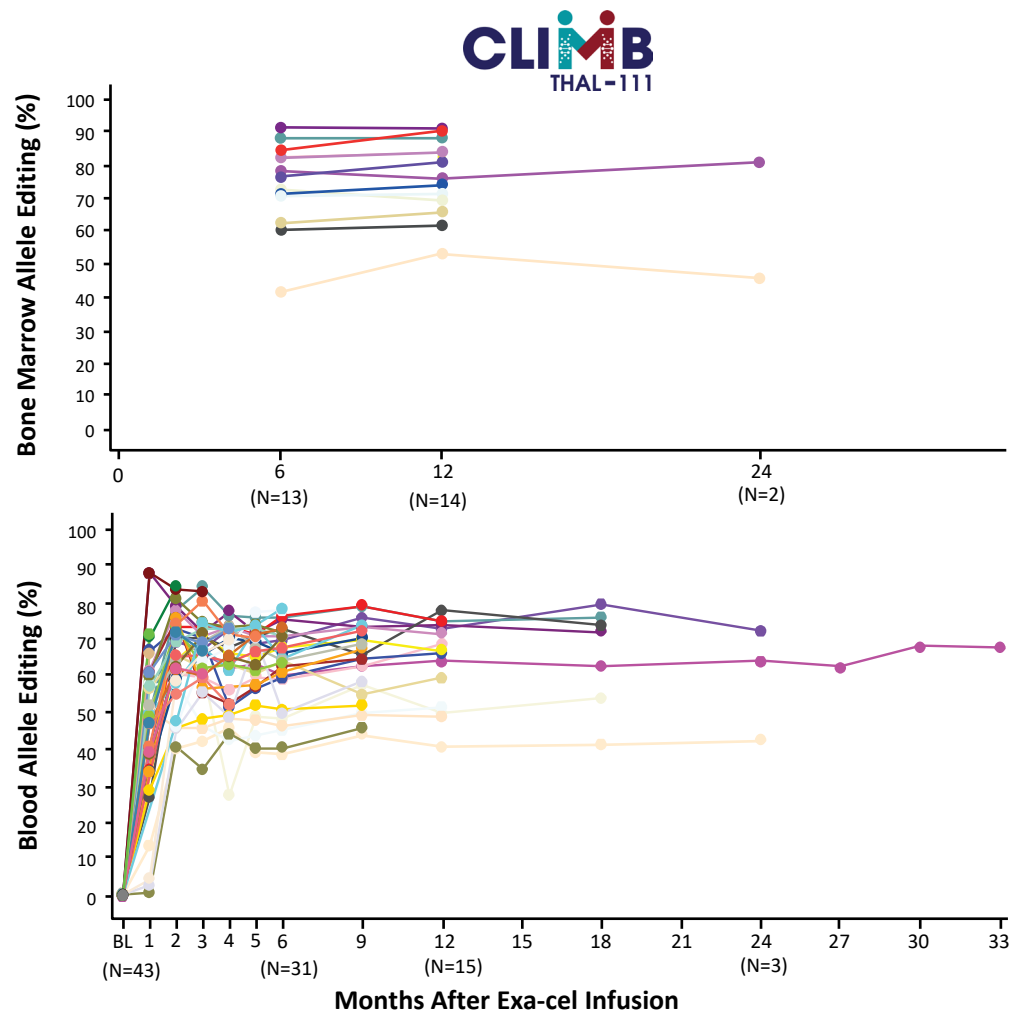


Data cut-off February 2022

Figures show mean (SE).

BL, baseline; F-cells, HbF-containing cells; HbF, fetal hemoglobin; SCD, sickle cell disease.

Durable *BCL11A* Editing Achieved in Bone Marrow (CD34⁺ Cells) and Peripheral Blood (Nucleated Cells)



Data cut-off February 2022

Bone marrow allele editing figures include patients who have at least 12 months of follow-up whereas the blood allele editing figures include all patients.

BCL11A, B-cell lymphoma/leukemia 11A; **BL**, baseline; **SCD**, sickle cell disease.



Exa-cel Safety Profile Is Consistent With that of Busulfan Myeloablation and Autologous HSCT



Post-Exa-cel AE Overview	TDT (n = 44)	SCD (n = 31)
Patient-time exposure, Patient-months	520.2	288.6
Patients with any AEs, n (%)	44 (100.0)	31 (100.0)
Patients with AEs related to exa-cel, n (%) ^a	12 (27.3)	9 (29.0)
Patients with AEs related to busulfan, n (%) ^a	43 (97.7)	31 (100.0)
Patients with AEs Grade 3/4, n (%)	38 (86.4)	31 (100.0)
Patients with SAEs, n (%)	15 (34.1)	10 (32.3)
Patients with SAEs related to exa-cel, n (%) ^a	2 (4.5)	0
Patients with AEs leading to death, n (%)	0	0*

* After the data cut in February 2022, an adult patient with SCD developed pneumonia and respiratory failure following SARS-CoV-2 infection, resulting in death. The investigator assessed the events as due to SARS-CoV-2 infection, with a potential contribution of busulfan lung injury, and unrelated to exa-cel.

Data cut-off February 2022

AE, adverse event; HSCT, hematopoietic stem cell transplantation; SAE, serious adverse event; SCD, sickle cell disease; TDT, transfusion-dependent β -thalassemia.

^a Includes related and possibly related AEs.



Two Patients With TDT and No Patients With SCD Had Exa-cel Related SAEs

- **One patient with TDT** had 3 SAEs related to exa-cel of hemophagocytic lymphohistiocytosis (HLH; macrophage activation syndrome), acute respiratory distress syndrome, and headache, and 1 SAE of idiopathic pneumonia syndrome related to both exa-cel and busulfan
 - All began peri-engraftment and occurred in the context of HLH. Events fully resolved with steroid and immunosuppressant treatment
 - HLH is a systemic hyperinflammatory non-infectious syndrome that has been reported after autologous HSCT
- **One patient with TDT** had SAEs related to both exa-cel and busulfan of delayed neutrophil engraftment and thrombocytopenia
 - Both SAEs resolved. Neutrophil engraftment was achieved on Day 56 without use of backup cells
 - All other patients in both exa-cel trials achieved neutrophil engraftment within 43 days of exa-cel infusion
- **No patients with SCD** had an SAE considered related or possibly related to exa-cel

Data cut-off February 2022

HLH, hemophagocytic lymphohistiocytosis; HSCT, hematopoietic stem cell transplant; SAE, serious adverse event; SCD, sickle cell disease; TDT, transfusion-dependent β -thalassemia.



Conclusions

- Data from 75 patients with TDT and severe SCD (data cut-off February 2022) shows a **single dose of exa-cel leads to early increases in HbF and total Hb** that are durable up to nearly 3 years
- 42 of 44 patients with TDT **stopped RBC transfusions** and all 31 patients with severe SCD were **free of VOCs**
- Patients with ≥ 1 year of follow up have stable proportions of *BCL11A* edited alleles in bone marrow and peripheral blood, **indicating successful and durable editing** of long-term HSCs
- **Safety profile of exa-cel is consistent** with that of busulfan myeloablative conditioning and autologous hematopoietic stem cell transplantation
- Exa-cel has the potential to be the first CRISPR/Cas9-based therapy to provide a **functional cure for patients with TDT and severe SCD**

Treatment with exa-cel is associated with early, consistent, and durable increases in HbF levels leading to elimination of transfusions in almost all patients with TDT and elimination of VOCs in all patients with SCD

Acknowledgments

Thank you to study participants and their families,
as well as sites, investigators, nurses, and the entire exa-cel team

The authors acknowledge the site investigators for CLIMB THAL-111 and CLIMB SCD-121 trials

Mattia Algeri	Janet Kwiatkowski	Akshay Sharma
Monica Bhatia	Peter Lang	Paul Telfer
Ben Carpenter	Amanda Li	Donna Wall
Marina Cavazzana	Robert Liem	Michael Eckrich
Selim Corbacioglu	Franco Locatelli	Alexis Thompson
Josu de la Fuente	Markus Mapara	John Wu
Laurence Dedeken	Roland Meisel	Rupert Handgretinger
Alina Ferster	Lyndsay Molinari	
Haydar Frangoul	Damiano Rondelli	
Stephan Grupp	Ami Shah	

Medical writing support and editorial coordination was provided by Nathan Blow, PhD who is an employee of Vertex Pharmaceuticals Incorporated and may hold stock and/or stock options at the company

Graphic support was provided by Complete HealthVizion, Inc., funded by Vertex Pharmaceuticals Incorporated

CLIMB THAL-111 and CLIMB SCD-121 trials are sponsored by Vertex Pharmaceuticals Incorporated

